



Published by **The WISCONSIN AQUACULTURE ASSOCIATION**

Volume 41 Number 3 www.wisconsinaquaculture.com September 2008

**MULTI SPECIES
Midwest Aquaculture Conference
September 18-20, 2008
In Historic Milwaukee, WI
Hilton Milwaukee City Center**

**YOU'RE GOING TO LOVE MILWAUKEE!!
"Gathering Place by the Waters"**

The US Trout Farmers Association invites you to an exciting meeting with a trade show and producer sessions of interest to all fish farmers (not just trout farmers). The show has been scheduled to run immediately after the American Zoological Society tradeshow and conference.

This national conference has lots to offer: 22 talks; VHS Summit; NAA Open Forum; project updates and five year plans from USDA/ARS/NCCCWA; nutrition forum; vendor show; Aquaculture Library from UW Sea Grant; receptions, banquet, award presentation, raffle, and Saturday tours of Great Lakes WATER Institute, Milwaukee Corrections Fish Farm, and Rushing Waters Fisheries.

Details are found on pages and the registration form starts on page 13. You may also go to www.ustfa.org

DATCP Emergency and Permanent VHS and Fish Farm Registration Rules

At the time of this printing, the Emergency Rule hearing and the DATCP Board meeting hadn't occurred yet (August 1 and 6) - please check with the WAA website for updates, and if you are a WAA member and not on our listserv, email me (cindy@wisconsinaquaculture.com) your email address so you can get the most current information emailed to you.

Emergency Rule

The Department of Agriculture, Trade, and Consumer Protection (DATCP) has prepared both a new Emergency Rule, Docket No. 08-R-06, and a proposed Final Rule, Docket No 07-R-01. The previous Emergency Rule concerning Viral Hemorrhagic Septicemia expired on May 28, 2008 so there was a need for a second emergency rule because the proposed permanent rule is not in effect.

The wording of this emergency rule reverts back to the language of ATCP permanent rules prior to the first emergency rule. Among other things, this emergency rule helps to clarify language in the first rule, references fish or fish eggs distributed by a bait dealer, and makes an additional provision by permit for reintroduction of fish or fish eggs back into the same river system downstream from where they were collected (walleye wagons). *Cont pg 6*

DATCP RULE CHANGES IN AQUACULTURE REGISTRATION FEES

The change in aquaculture rules are as follows, and effective September 1, 2008:

- (1) Fish farm registrations will expire on March 31, 2009 instead of December 31, 2008.
Renewal paperwork will be forwarded automatically, before the new renewal deadline.
- (2) Fish import permits will cost \$90.00.
- (3) A fish farm registration will cost:
 - (a) Fish Farm Type 1 - Annual Registration
\$37.50 annual fee for one fish farm
\$50.00 annual fee for any number of type 1 fish farms.
 - (b) Fish Farm Type 2 - Annual Registration
\$125.00 annual fee covers 1 - 5 type 2 fish farms
\$150.00 annual fee covers 6 - 10 type 2 fish farms
\$200.00 annual fee covers 11 - 20 type 2 fish farms

\$300.00 annual fee covers 20 or more type 2 fish farms

- (c) Type 1 and type 2 are charged independently, and can not be pooled
(Example: I register one Type 1 fish farm and two Type 2 fish farms, my total registration fee is \$162.50.)
- (4) The only exemptions to the annual registration fee is for primary and secondary schools

NOTE: For practical purposes a "fish farm" is considered to be one parcel of property (or contiguous parcel/properties) where ponds, tanks and/or raceways are located. If the owner/operator has several parcels or properties in various locations around a county, or the state, they are separate fish farms and each is counted to calculate the registration fee.

SEPTEMBER 2008

The CREEL

Volume 41 * * * Number 3

WISCONSIN AQUACULTURE ASSOCIATION

e-mail: Cindy@wisconsinaquaculture.com

www.wisconsinaquaculture.com

EDITOR

Cindy Johnson,

P.O. Box 1408, Bayfield, WI 54814 715-373-2990

Cindy@wisconsinaquaculture.com

CONTRIBUTORS

Greg Fischer, Fish Manager, NADF

Jim Held, Aquaculture Outreach Specialist, Southern

Cindy Johnson, WAA

Ron Johnson, Aquaculture Outreach Specialist, Northern

Sarah Kaatz, Aquaculture Outreach Specialist, Central

Bob Robinson, Kasco Marine, Inc

Beverly Simonds, Aqua License/Permit Program Associate, DATCP

OFFICERS, terms expire in 2009

President: Jeff Taylor, Star Prairie Trout Farm, Star Prairie, WI

651-699-6050 jtaylor@dungarvin.com

Vice Pres: Terry Hogan, Hayward Bait & Tackle, Inc. Hayward, WI

715-634-2921 TLH001@netzero.com

Chairman of the Board: Peter Fritsch, Rushing Waters Fisheries, Inc.,
Palmyra, WI 262-495-2089 Petef@rushingwaters.net

Sec/Treas(appointed position): Cindy Johnson, Washburn, WI

715-373-2990 Cindy@wisconsinaquaculture.com

DIRECTORS

Term expires 2009:

Jim Pierce, Trout Palace, LaFarge, WI 608-625-2084 jim@tilth.org

Bill West, Blue Iris Fish Farm LLC., Black Creek, WI 920-730-0684

blueirisenv@gmail.com

Term expires 2010:

Jerry Peplinski, Pepco Aquaculture, Cecil, WI 715-745-2119

pepco@frontiernet.net

Fritz Gollon, Stevens Point, WI 715-344-4193

Term expires 2011:

David Gollon, Gollon Bait & Fish Farm, Inc., Dodgeville, WI

608-935-2098 gollon@hughes.net

Mike Heilman, Brookcrest Fisheries LTD, Cedar Grove, WI

920-668-6385 brookcrest@excel.net

The CREEL is published quarterly, March, June, September and December; WAA welcomes input and involvement from all interested parties.

Unless otherwise indicated, all articles are authored by *The CREEL* editor and/or WAA editorial committee. Editorial comments pertinent to other submissions are italicized and noted in parenthesis (ed.)

All opinions expressed in *The CREEL* are those of the contributor/author and not necessarily those of the Wisconsin Aquaculture Association, its officers or directors.

TABLE OF CONTENTS

USTF - Midwest Aquaculture Conference	1
DATCP Emergency and Permanent Rules	1
DATCP Rule Changes-Aquaculture Registration Fees	1
President's Message - J. Taylor	3
WAA Committees	3
From the Chairman's Desk - P. Fritsch	4
Tips & Insights - G. Fischer	4
WAA Joins NAA	4
Calendar of Events	7
Dr. Lance Grahn Accepts New Position - R. Johnson	9
UW-Mad, UW-SP, NADF Research Update	10
2008 WAAE Conference - C. Johnson, S. Kaatz	10
Double Cropping of Yellow Perch Fingerlings in Ponds - J. Held, J. Malison, A. Smith, C. Hartleb	11
2008 Shawano County Brunch on the Farm - S. Kaatz	12
Midwest Aquaculture Speaker Agenda/Registration Form	13
Federal Legislative Updates	17
From the Editor - C. Johnson	17
A Visit to Seven Pines Fishery - B. Robinson	18
Cook's Corner	19
Aquaculture Field Day & Annual WAA Picnic - S. Kaatz	21
WAA Agenda/Minutes	22
WAIAC Minutes	22
Wisconsin Fish Farm Day Survey	26

MEMBERSHIP

Active (voting): \$50/ year

Associate (non-voting): \$25/ year

Group(1 vote): \$75/ year

All memberships include annual subscription to *The CREEL*

The CREEL reaches many potential customers four times per year. If your business involves the growing or selling of any aquaculture product or any necessary equipment, feed or services, advertising will be a great benefit to you.

The CREEL goes to press the 1st of February, May, August, or November. Please submit photo-ready ad copy and payment to the Secretary/Editor 1 week prior to this for inclusion in the upcoming issue.

Rates per issue are as follows:

1/8 page: \$30; 1/4 page: \$40; 1/2 page: \$60; Full page: \$100

President's Message

JEFF TAYLOR - STAR PRAIRIE TROUT FARM

Hello everyone, it's hard to believe August is already here and summer will be over soon.

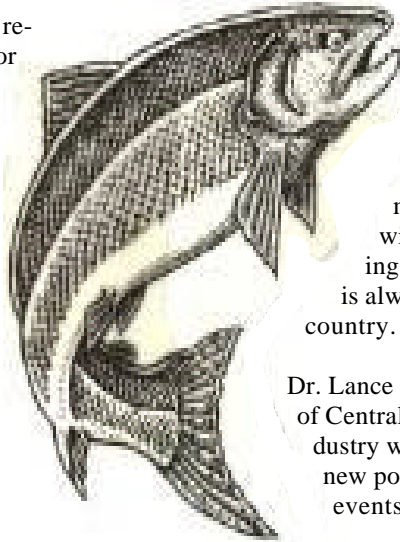
Here is a quick update of some of the recent WAA Activities.

With so many issues with aquaculture coming up recently, we have decided to hire a person to monitor issues at the legislature and report back to the Board on any issues relevant to fish farming in Wisconsin.

WAA is working more closely with WAIAC and committees have been re-structured to 3 main groups that are working on specific projects, one of which is the Wisconsin farm raised fish brochure.

The Conference Committee is moving forward on the 2009 WAA Aquaculture Conference. The date is March 13 and 14. We have chosen Hayward as the location and will be working on topics and speakers with a possible tour.

We have joined the National Aquaculture Association (NAA) in an effort to have our voice heard on a larger scale than just Wisconsin for important issues. NAA is a U.S. producer-based association dedicated to the establishment of national programs that further the common interest of the membership.



WAA has voiced its standing on 2 federal issues. One is on invasive species, HR 6311 - Nonnative Wildlife Invasion Prevention Act, and the other is urging USDA to include all fish in its 2008 farm bill. Details can be found on page 17.

The US Trout Farmers Association's Midwest Aquaculture Conference is being held in Milwaukee, Wisconsin Sept. 18 – 20. I will be presenting a short speech to their group on behalf of WAA at the welcome session on the 18th. Also, later that day, we will be having our quarterly board meeting at the hotel. I hope many WAA members will take advantage of this national organization meeting in Wisconsin – they have a great list of topics and it is always fun to meet fish farmers from other parts of the country.

Dr. Lance Grahn has taken a new position with the University of Central Arkansas. His support and enthusiasm for our industry will be greatly missed. WAA wishes him well in his new position and we look forward to seeing him at future events.

Until next time,

Jeff Taylor

Wisc. aquaculture assn— committees

We are still developing WAA committees and will be adding committees/sub committees and members as the needs arise. The following are committees that were formed at the June WAIAC meeting and which will be the basis WAA committees will be formed around

Teams/Committee	Description	Members
Business Development	Creation, review and development of business development tools for aquaculture	Peter Fritsch, Sarah Kaatz
Research & Education	Coordination and review of research, training, educational programming	Dan Gruendemann Jim Held
Regulatory Policy	Coordination, review and impact assessment of regulatory actions	Dave Gollon Terry Hogan Ron Johnson
Conference	Planning of 2009 Conference	Terry Hogan Peter Fritsch Jerry Peplinski Jim Pierce Cindy Johnson

Peter Fritsch - Manager, Rushing Waters Fisheries

From The Chairman's Desk

"How high is the water?" was the most frequently asked question in Southern Wisconsin this summer. There are still people out of their homes in our area, and farm fields with water in long enough that a bumper crop of minnows are ready for harvest. (Bait guys, can we go get them?)

There are few things I want to mention briefly. First, on August 23rd WAA is sponsoring the first annual Fish Farm Day. The goal of this day is to promote our industry and try to reach out to as many people as we can. Each farm can offer something different to the public; this is your chance to create a buzz about your farm.

Wisconsin is also hosting the US Trout Farmers and Midwest Aquaculture conference in Milwaukee, September 18-20. This is a great event that can further help bring information to farmers, so take advantage of the close proximity of this national conference.

This is a short and sweet installment, but I have been busy finishing up our new drive thru on the farm, check out the picture. Please do not drink and drive.

Sincerely,
Peter J Fritsch



A drunk driver took the wrong turn and ended up inside Peter's house. Peter and his wife were upstairs sleeping and amazingly, no one was hurt.

WAA Becomes a Member of the National Aquaculture Association

At the Board Meeting in June, WAA voted to join NAA. Our joining NAA comes at a time when many issues dealing with aquaculture and farmed fish are coming to the forefront of the public's awareness and government's notice. NAA and WAA will work together to focus on promoting aquaculture, education the public about the safety of U.S. farmed fish and work for fair legislation to help the vitality of U.S. aquaculture. For more info on NAA www.theNAA.net

Tips & Insights

By Greg Fischer,
NADF Facility Manager



As I pondered what to discuss for this issue we had an otter move into one of our outdoor ponds at NADF!!! So I decided to discuss preventative measures to keep critters out of your fish rearing facilities.

Outdoor ponds are limited mainly due to size and configuration as to what measures you can take. Generally, there are predators that may get in and eat your fish and there are other things that may make harvest more difficult such as tadpoles. One item that we have found helps keep several animals and amphibians at bay around ponds is buried metal flashing. It is important to bury the flashing and bend out the buried edge so animals cannot dig under to get into the ponds. It is also important to go high enough to prevent some animals from jumping over the flashing (we found out the hard way with mink!!). It helps to have a fence to secure the flashing to as well.

Bird predation in outdoor ponds is another big problem for aquaculture. If ponds are being built it helps to have fairly steep slopes that limit wading birds such as blue herons from feeding effectively. Maintaining turbidity in ponds with fertilizer or by stirring up the pond with aerators or by physical means will also decrease predation by sight feeding birds such as kingfishers.

Outdoor raceways with fish species such as trout that require clean water present a different set of issues with predator control. We have all seen the fake owls, eyeballs and flutter tape that are supposed to scare the birds away. These do not work very well especially if they don't move or flutter in the wind. But, it still doesn't hurt to try them. Another proactive tactic is a propane fired boom cannon. Again, the birds seem to get used to these as well and your neighbors may not like you much if you use this one. Most effective items for the raceways at NADF has been the use of covers, fencing, bird netting, and buried fencing to help keep fish predators at bay.

These are just a few ideas to share. Please feel free to let us know how you deal with fish predation and other items on your hatchery so we can share that others.

As always, remember happy fish start with good water quality and a proper rearing environment. Which includes not getting chased by birds and otters!!!



Outdoor raceways at NADF with fencing, bird netting, buried fencing, fake owl and raceway covers.

AquaMax[®]

FISH DIETS



AQUAMAX[®] STARTER

High digestible, high energy nutrient dense diet excellent for starters and fingerlings.

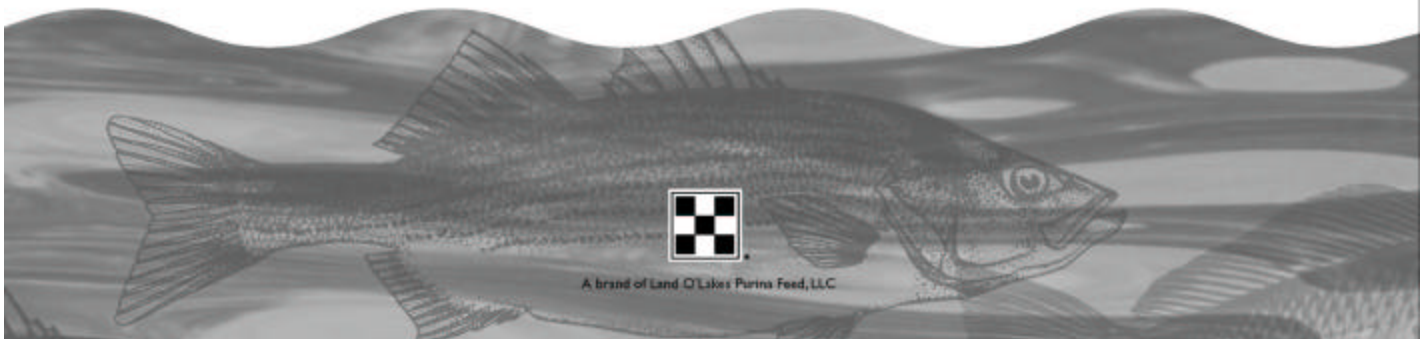


AQUAMAX[®] CARNIVOROUS SPECIES

Nutritionally complete diet with moderate amounts of nutrients for warm water animals.

- Manufactured with domestic fishmeal
- Formulated for Max digestibility and performance
- From Fry Powder to 1/4" Floating
- Available at 120 Wisconsin locations
- Available 1 bag at a time, or by the truckload
- Call toll free 1.800.227.8941 for the Dealer nearest you
- Call Rick Decker 920.450.0408 to visit more on AquaMax[®]

WE SUPPORT WISCONSIN AQUACULTURE!



Permanent Rule, cont from page 1

Cont from pg 1

Permanent Rule

The following permanent rule contains some new provisions including creation of a Type 3 fish farm (that receive fish or fish eggs from the wild), a section on “medically separated” and fees associated with the inspection, clarification of requirement for fish health certificates, “walleye wagon” language from emergency rule 2, and language concerning bait fish.

PROPOSED ORDER OF THE WISCONSIN DEPARTMENT OF AGRICULTURE, TRADE AND CONSUMER PROTECTION ADOPTING RULES

Analysis Prepared by the Department of Agriculture, Trade and Consumer Protection

This rule modifies current Wisconsin animal health and disease control rules administered by the Department of Agriculture, Trade and Consumer Protection (“DATCP”). Among other things, this rule:

- Establishes new rules related to viral hemorrhagic septicemia (VHS) in fish, and simplifies registration of fish farms. This “permanent” VHS control rule is similar, but not identical, to temporary “emergency” VHS control rules previously adopted by DATCP.

Fish

Fish Farm Registrations

Under current rules, fish farm operators must register fish farms as either a *type 1* or *type 2* fish farm, depending on the activities conducted at the fish farm. Under current rules, a fish farm operator may allow public fishing at a *type 1* or *type 2* fish farm, but may only sell or distribute fish from a *type 2* fish farm (there are limited exceptions).

This rule modifies the scope of a *type 2* fish farm registration, and creates a new *type 3* fish farm registration category. Under this rule:

- An operator may allow public fishing (including public fishing for a fee) at a *type 1*, *type 2* or *type 3* fish farm.
- An operator may not sell or distribute fish from a *type 1* fish farm (there are limited exceptions).
- An operator may sell or distribute fish from a *type 2* or *type 3* fish farm.
- An operator may not sell or distribute fish from a fish farm that receives any fish or fish eggs from wild sources unless that fish farm is registered as a *type 3* fish farm (there are limited exceptions).

This rule clarifies fish farm registrations:

- A fish farm registration is limited to a single fish farm location (a single land parcel or contiguous land parcels). All of the fish farm facilities on contiguous parcels may be registered as a single fish farm.
- Fish farms on non-contiguous land parcels must be registered as separate fish farms.
- A person may register 2 or more fish farms in a single application process.
- An operator may register 2 or more fish farms located on the

same land parcel, or on contiguous land parcels, subject to the following conditions:

- The fish farms must be “medically-separated.” DATCP must inspect the fish farms to confirm that they are “medically separated” (DATCP will charge an inspection fee of \$400 per day of inspection).
- Each fish farm is considered a separate fish farm for purposes of disease control and movement.
- Fish or fish eggs moved between the fish farms must be accompanied by a fish health certificate, and the operator must keep a record of the movement.

Registrant Responsibility

This rule clarifies that a person who registers a fish farm is responsible for ensuring that fish farm operations comply with DATCP rules. However, this rule does not relieve other persons of liability for rule violations that they commit.

Viral Hemorrhagic Septicemia; Expanded Testing

VHS is a serious disease of fish. VHS has been found in Lake Michigan and the Lake Winnebago system, but has not yet been reported in any Wisconsin fish farm. The United States Department of Agriculture (USDA) has identified fish species that are known to be susceptible to VHS.

Current DATCP “permanent” rules require health certificates for all of the following:

- Fish and fish eggs (including bait) imported into Wisconsin.
- Fish and fish eggs stocked into Wisconsin public waters.
- Fish and fish eggs moved between Wisconsin fish farms.

Under current DATCP “permanent” rules, *import* health certificates must include VHS testing if the import shipment includes salmonids (salmon, trout, etc.) or originates from a state or province where VHS is known to occur. However, current “permanent” rules do not require VHS testing for any of the following:

- Fish or fish eggs stocked into Wisconsin public waters from *Wisconsin* sources.
- Bait fish or fish eggs originating from *Wisconsin* sources.
- Fish or fish eggs moved between Wisconsin fish farms.
- Non-salmonids imported from states (such as Minnesota) where VHS has not yet been found.

DATCP recently adopted temporary “emergency” rules to expand VHS testing requirements. This rule adopts those VHS testing requirements on a “permanent” basis. This rule is similar, but not identical, to the temporary emergency rules.

Under this rule, a fish health certificate and VHS testing are required for all of the following fish and fish eggs if they are of a *known VHS-susceptible species* and were either (1) collected from a wild source in any state within the preceding 12 months, or (2) kept on a *type 3* fish farm in this state:

- Fish or fish eggs stocked into Wisconsin public waters. There is a limited exemption (see below) for fish or fish eggs reintroduced to the same water body from which they are collected.
- Fish moved between Wisconsin fish farms, or from a Wisconsin fish farm to any other place (there are limited exemptions for fish shipped to food processing or retail food establishments).
- Fish or fish eggs distributed by a bait dealer for use as bait. The bait fish testing requirement will initially apply to *Cont on page 8*

CALENDAR OF EVENTS

MEETINGS

September 18

WAA Board Meeting - 4:45 pm - 6 pm

Location: Hilton Milwaukee City Center, Milwaukee

December 5

WAIAC Meeting

Location: Madison, place TBA, in conjunction with DNR/DATCP Rules workshop

WORKSHOPS

September 27

Beginning Aquaculture

Location: TBA

October 25

Beginning Aquaculture

Location: TBA

December 5

DNR/DATCP RULES

Location: Madison, place TBA

USTF Midwest Aquaculture Conference

September 18 - 20

Location: Hilton Milwaukee City Center, Milwaukee

2009 CONFERENCE

March 13 & 14, 2009

Location: Hayward, WI

Laboratory Services for the Aquaculture Industry

- ◆ Water Quality Studies
- ◆ Wastewater Analysis
- ◆ Fish Tissue Analysis

- Nutrients
- Heavy Metals/Inorganics
- PCBs/Organics

Quality Laboratory Services Since 1974

The Value of Confidence



Northern Lake Service, Inc.

Environmental Analytical Laboratory

400 North Lake Avenue, Crandon, WI

Ph: 715-478-2777 Fax: 715-478-3060

www.nlslab.com



TROUTLODGE

THE WORLD'S LEADING SUPPLIER OF
Eyed Salmonid Eggs

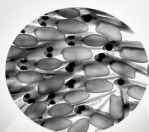
Rainbow trout eggs
Silver steelhead eggs
Atlantic salmon eggs
Arctic charr eggs
All female eggs
Triploid eggs



Comprehensive
genetic selection
program



Personalized
customer and
technical services



Internationally accepted
independent
disease-free certifications



Eggs are available
every week
of the year

Since 1945

www.troutlodge.com

T +1 (253) 863-0446 F +1 (253) 863-4715 E trout@troutlodge.com

PO Box 1290, Sumner, WA 98390 USA

Permanent Rule, cont from page 6

emerald shiners (a known VHS-susceptible species), but will *not* initially apply to other major bait species such as fathead minnows, white suckers and golden shiners (which are not yet known to be VHS-susceptible). However, it could eventually apply to other species if USDA finds that those species are also VHS-susceptible. A retail bait dealer is not required to conduct duplicate tests on fish previously tested by a wholesale bait dealer.

This rule also does the following:

- Prohibits any person from selling bait fish *of any kind* if the seller has reason to know that the bait is affected with VHS or another reportable disease.
- Provides that a fish health certificate covering a fish farm or fish shipment becomes immediately void if fish or fish eggs not covered by a valid fish health certificate are added to the covered fish farm or fish shipment.

Fish Reintroduced to Same Water Body; Testing Exemption

Under this rule, fish or fish eggs reintroduced to the same public water body from which they are collected are exempt from VHS and other disease testing requirements if all of the following apply (a veterinarian or fish health inspector must still issue a fish health certificate based on a visual examination):

- DATCP issues a permit for the reintroduction.
- DNR approves the collection and reintroduction.
- The fish or fish eggs are not commingled with fish or fish eggs from any other water source.

The fish or fish eggs are reintroduced into the same lake from which they were collected, or at the same point or a downstream point in the same river system from which they were collected.

The fish or fish eggs are reintroduced within 30 days after they are collected, or within 30 days after the fish eggs hatch, whichever is later.

The fish or fish eggs are reintroduced for the purpose of increasing or rehabilitating the population of a desirable sport fishing species.

Operator Moving Fish between the Operator’s Own Fish Farms; Testing and Health Certificate Exemption

This rule clarifies that, when an operator (including DNR) moves fish or fish eggs between the operator’s own fish farms in this state, the operator is exempt from health certificate requirements, VHS testing requirements, and other disease testing requirements under this rule unless the operator does one of the following:

- Moves fish or fish eggs from a *type 3* fish farm to a *type 1* or *type 2* fish farm.
- Moves fish or fish eggs between fish farms that are required to be medically separated.

A fish farm operator must make a record of each movement of fish or fish eggs between the operator’s fish farms, regardless of whether health certificate or testing requirements apply. An operator may not move fish or fish eggs if the operator knows or has reason to know that the fish or fish eggs are affected with a reportable disease such as VHS. DATCP may also issue quarantine and other disease control orders to individual fish farm operators, as necessary. *cont on pg 9*



WISCONSIN FLOWGATE & CULVERT COMPANY, INC.

9511 Bainbridge Trail Wisconsin Rapids, WI 54494
Telephone: 715-325-3302 Fax: 715-325-6213 Toll-Free: 866-FLOGATE
E-mail: wisflow@tznnet.com Website: wvcp.com

YOUR SOURCE FOR ALUMINUM FLOWGATES, CULVERTS & WATER CONTROL STRUCTURES



Dr. Lance Grahn Accepts New Position in Arkansas

by Ron Johnson

On July 14, 2008 Dr. Lance Grahn, Dean of the College of Letters and Science, at the University of Wisconsin – Stevens Point, started his new position as provost and chief academic officer at the University of Central Arkansas. Dr. Grahn received his PhD in Latin American History from Duke University. In addition to serving as dean Grahn was also a professor in the Department of History at Stevens Point. Previously he served as chair of the history department at Marquette University for 15 years.

Dr. Grahn is best known in Wisconsin Aquaculture as the enthusiastic dean from UW-SP who embraced aquaculture and oversaw the Northern Aquaculture Demonstration Facility (NADF). Dr. Grahn attended many of the WAA quarterly meetings and workshops, always listening to the needs of fish farmers and eagerly learning about aquaculture. He was recognized by WAA earlier this spring, being presented with the “Friend of Aquaculture” Award for his great contributions and leadership in Wisconsin Aquaculture.



We wish Dr. Grahn the best in his new position in Arkansas but will miss his passion, enduring friendly manner and the professionalism he brought to Wisconsin Aquaculture. At the June Field Days at NADF, Dr. Grahn said, “I will miss Wisconsin fish farmers, continue to wear my WAA hat and keep my membership in WAA current. Working with fish farmers has been one of the best experiences in my life”.



AQUACULTURE MANUALS

NCRAC'S
WALLEYE CULTURE MANUAL

SUNFISH CULTURE GUIDE

NCRAC'S NEWLY RELEASED
YELLOW PERCH CULTURE MANUAL

\$30 each INCLUDES SHIPPING

AND
EXCLUSIVELY FROM
WISCONSIN AQUACULTURE ASSOCIATION

Managing Wisconsin Fish Ponds
\$15 includes shipping

ALL BOOKS AVAILABLE ON WAA'S ONLINE STORE

Aquaculture Outreach Specialists

Northern—Ron Johnson

P.O. Box 165
Bayfield, WI 54814
715-779-3189
Ron.Johnson@uwsp.edu

Central—Sarah Kaatz

Univ of WI-SP, 234 Nelson Hall,
Stevens Point, WI 54481
715-346-3037
SKaatz@uwsp.edu

Southern—Jim Held

302 S. Main St
Lake Mills, WI 53551
920-648-2902,
JaHeld@wisc.edu

These people are here to assist you. Please contact them with any questions you may have concerning aquaculture.

Permanent Rule,

cont from page 8

VHS Test Reports

Under this rule, a veterinarian or fish health inspector who tests fish in this state for viral hemorrhagic septicemia (VHS) must report the test result to DATCP, regardless of whether the test result is positive or negative.

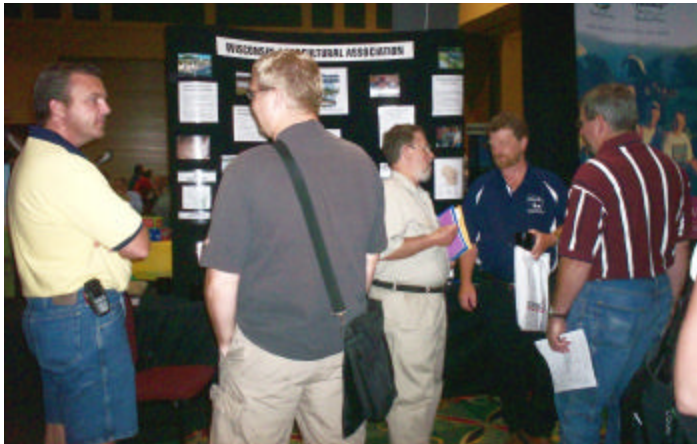
To view the actual Permanent Rule changes, go to www.wisconsinaquaculture.com, under *News*.

2008 WAAE (Wisconsin Association of Agriculture Educators) Professional Development Conference

by Sarah Kaatz & Cindy Johnson

VENDOR SHOW - WAAE held their Professional Development Conference in Madison on July 7-8. WAA participated by having a booth at their vendor show which was open from 8 am to 4:30 pm on Monday and on Tuesday morning, 7-9 am. There were about 40 vendors in attendance. The main conference talks started Tuesday after 9am.

The conference was well attended and we were very well received by all attendees and a number of them made a point of thanking us for coming and participating in their conference. Numerous teachers visited the booth and indicated they were either teaching aquaculture or planning to add it to their class. Some of the schools with a natural resource/conservation class do not have the money or space to house even a small tank, but the teachers do give at least one lesson on aquaculture.



Mike Heilman, Ron Johnson and Cindy Johnson talked with the teachers about several things:

- Visiting the WAA website and doing a search to find a farm near them and scheduling a class trip. Several take their class to a DNR hatchery and they were encouraged to also visit a farm to see a commercial operation.
- Using the WAA website to locate fish for their classrooms.
- Ask a local farmer if they could give a class lecture.
- Take advantage of the 3 Aquaculture Outreach Specialists to be guest lecturers.
- Handed out Creels, WAA brochures, UW-Ext brochures, the 2009 Poster Contest flyer, and an activity/game sheet for classroom use.

WAAE asked each vendor to offer a door prize at their table, and on Tuesday morning the winning names were drawn at each vendor table. WAA offered 20 Fish of Wisconsin posters and Mike donated 100 bluegill fry in WAA's name. We had 41 teachers register for the door prizes. Dale Carlson, Sevastopol School, Sturgeon Bay, won the bluegill fry and Josh Tarrell, Riverdale High School, Muscoda, won the posters.

This conference gave WAA a very good opportunity to be a positive part of educating the students and teachers about aquaculture and culturing a good working relationship with the schools.



WORKSHOP - On Tuesday, July 8th, the UW Extension Aquaculture Specialists gave a workshop for high school agriculture teachers at the annual Wisconsin Association of Agricultural Educators Conference (WAAE) that was held in Madison. The workshop was attended by 21 Ag teachers who include aquaculture in their curriculums.

The two hour workshop included an introduction to Wisconsin Aquaculture and an update on VHS, presented by Ron Johnson. The second part of the workshop was presenting three lesson plans that were prepared for the teachers that they could take with them and incorporate into their classroom. Ron Johnson presented "The COOL Law", an introduction into the Country of Origin Labeling law, Jim Held presented, "Getting Started in Aquaculture", and Sarah Kaatz presented, "Biosecurity for your Classroom". Each teacher was given a 3-ring binder of information that included each lesson plan and resources, such as helpful websites, worksheets and articles. The session was well received and we hope to present at the WAAE Conference again next year.



UW-Madison/UW-SP/NADF Research Update, June, 2008

Increasing the efficiency of Yellow Perch Fingerling Production by Optimizing Pond Trophic Dynamics and Feed-training Strategies

WI Sea Grant – Hartleb and Malison

Conducted at Lake Mills and Coolwater Farms, LLC, using 16 ponds

- Test 4 fertilization methods (organic/inorganic).
- Evaluate zooplankton, phytoplankton, benthos.
- Evaluate larval fish stomach contents.
- Evaluate fish growth and production.
- Test feed-training methods – water temperature and quality, photoperiod, fish density.

Cont on page 11

Research Update, cont from page 10

Proposed new project (NADF/UW-Madison):

Demonstrating New Technologies for Producing Walleye and Hybrid Walleye for Stocking and Food Fish

Malison, Hartleb, Summerfelt, Morris, Kinnunen, Gunderson

- Intensive tank culture of walleye fry
- Fast-growing walleye/sauger hybrids
- Advanced, out-of-season spawning

Production of large walleye fingerlings for stocking

- Spawn walleye in early February
- Intensive tank culture of fry
- Stock 2-3" fingerlings in April/May
- Extend normal growing season for production of large fingerlings harvested in autumn

Production of hybrid walleye to food size in one growing season

- Spawn hybrid walleye in February
- Intensive tank culture of hybrid walleye fry
- Grow-out of hybrid walleye in ponds or RAS in one growing season
- Petite hybrid walleye fillets

Commercially Viable Out-of-Season Spawning Technologies to Improve Yellow Perch Fingerling Production

USDA SBIR Phase II to Coolwater Farms, LLC

Collaboration with UW-Madison

See following article

NADF RESEARCH REPORT

DOUBLE CROPPING OF YELLOW PERCH FINGERLINGS IN PONDS

Jim Held, Jeff Malison, Amanda Smith, and Chris Hartleb

One factor limiting the expansion of commercial yellow perch production is the availability of fingerlings. Yellow perch are group synchronous spawners, with each female producing a single ribbon of eggs in the spring. These eggs give rise to a single cohort of fingerlings produced in fertilized ponds. When the fry reach 18-25mm total length (TL) and approximately 6 weeks old, they are removed from ponds and habituated to formulated feed. Once trained, the fingerlings are returned to ponds or placed in recirculation systems for grow-out. The production of a second crop of eggs each year would enhance the profitability of fingerling production and potentially double the number of fingerlings available for grow-out.

Out-of-season spawning of perch, where the broodstock are maintained on phase-shifted temperatures and photoperiods, has proven expensive, unreliable and logistically difficult. In 2008 we employed a protocol that combined early spawning of the broodstock with delayed spawning and protracted egg incubation to attain double cropping of fingerling production ponds. Broodstock were removed from ponds shortly after ice out (April 1). Females for the

first spawn were injected with human chorionic gonadotropin (hCG, 50 I.U./fish) and held in tanks until eggs were stripped (6-8 days after injection). Females for the second spawn were held in a tank on cold (5-7°C) water and short (8 hr) day lengths. Eggs from the first spawn were incubated at 15°C and hatched 8 days later. Hatched fry were stocked into ponds on April 16. Fingerlings were harvested from ponds on May 29 at approximately 20 mm TL (0.25g) and stocked into tanks for habituation to formulated feed. The females being held for the second production cycle began to spawn spontaneously in the tank on May 8. Fish were spawned and ribbons collected without the use of hCG on May 12-15. Egg ribbons from the second spawn were incubated at either 3°C or 5°C and hatched in 27 and 20 days, respectively. Hatched fry were stocked into previously depopulated and refilled fingerling production ponds (June 4-8). Fingerlings were harvested from ponds on July 14-15 at 30-50mm TL (1.0-2.5g) and transferred to tanks for feed training.

Observation of embryonic development during incubation revealed differences between the three incubation regimens. Normal development was noted in eggs incubated at 15°C, normal but slowed development was noted at 5°C, and eggs incubated at 3°C displayed a high percentage of developmental abnormalities that became apparent in the final stages of embryonic maturation. The most obvious of these abnormalities was scoliosis of the caudal region. Further study is needed to determine if temperature manipulation during critical developmental stages can reduce or eliminate these abnormalities.

Second crops of fingerlings were recovered from all nine ponds stocked. Total numbers of fingerlings recovered were lower than anticipated for several reasons including developmental abnormalities of the hatched fry, and predation by feral fish. It is interesting to note that the second crop of perch were as much as 10 times larger than the first even though the pond phases of production were about the same duration (6 weeks). This was probably a function of elevated water temperatures and food abundance. Given the large size of the fish recovered, we could have harvested the ponds 10-14 days earlier resulting in more fish recovered. Throughout the course of the two pond production phases, we collected samples to compare the succession of phytoplankton, zooplankton, and benthic organisms. These samples are currently being analyzed. This study was supported by a grant from the USDA-SBIR program.

In other research undertaken by the NADF staff, pond trophic dynamics are being characterized for four fertilization regimens used in perch fingerling production ponds. Over the course of the eight-week study, samples of phytoplankton, zooplankton and benthos were collected and are currently being analyzed to determine differences between the fertilization protocols. This project will also examine fish stomach contents, growth and overall production numbers to help determine the type and amount of fertilizer to use to optimize pond productivity. This study was supported by a grant from the Wisconsin Sea Grant Institute.

MARK YOUR CALENDARS FOR SEPTEMBER 18 - 20

USTF MIDWEST AQUACULTURE CONFERENCE

**HILTON CITY CENTER
MILWAUKEE, WISCONSIN**

2008 Shawano County Brunch at the Farm - by Sarah Kaatz



2008 was the 25th year for this event – every year a different farm in Shawano County hosts it. As the name suggests, they serve brunch and it's all things dairy and food related/driven and focused. This year the host was expecting to serve between 3500 and 4000 people. I wasn't able to spend too much time checking other vendors out, but it seemed very family focused and friendly – petting zoo, kiddie peddle tractor pull, miniature pony rides, etc. There were 3 of us sharing a portion of the machine shed, the “commodities building” – the other 2 were from Farm Bureau. One lady was from the State office and was selling (and had samples of) Florida pecans in a farm swap type of program, and the other lady was promoting beef and “July Beef Month” with free samples of various beef sausage. The event ran from 9-1pm, but things were up and running a little after 8 and slowing down around 12:30. I had the booth set up with 100 fish posters, smoked trout spread from Rushing Waters, WAA brochures, fliers from Rushing Waters and Brookcrest farms, stocking information and NADF/UWEX info. The posters were a HUGE hit – completely gone by hour 2, and the trout spread was wildly popular as well. There was a steady line of people by the booth the whole time, and additionally, it was raining for parts of it, so people were milling around waiting for the rain to stop as well. There are now a whole slew of folks who know about fish farming in Wisconsin and if that was the goal, I'd say it was met. I spoke with several people who I will be following up regarding pond or start up questions. I thanked the farm hostess for inviting WAA and she mentioned that the event should/could be longer – so the set up may change a bit next

JUST RELEASED!

SPAWNING OF YELLOW PERCH DVD

Produced by University of Wisconsin-Extension, University of Wisconsin-NADF



Covers yellow perch broodstock handling, spawning, egg fertilization, incubation, hatch, and pond stocking of fry.

Approx 28 min in length.

\$10 - INCL SHIPPING

Go to: WisconsinAquaculture.com

FOR SALE Fish Farm/Aquaculture

Business Opportunity
In Central Wisconsin

A current profitable business

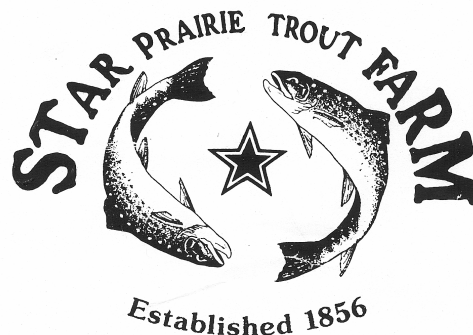
Includes:

- 138 acres
- 21 fish ponds of various sizes & depths
- 4 drilled wells
- Several buildings
- All trucks & equipment
- All customers & delivery routes

\$799,000.00

MLS # 707113

Call Ward Wolff
First Weber Realtors
715-340-9653



Fry to Adults **BUY, SELL, TRADE**

- ◆ *Live, Dressed and Smoked Rainbow Trout*
- ◆ *Discount live prices for repurchase*

400 Hill Ave, Star Prairie, WI 54026

888-545-6808 ← toll free

sprout@frontiernet.net

www.starprairietrout.com

MULTI SPECIES Midwest Aquaculture Conference



September 18-20, 2008

**In Historic Milwaukee, WI
Hilton Milwaukee City Center**

**YOU'RE GOING TO LOVE MILWAUKEE!!
"Gathering Place by the Waters"**

The US Trout Farmers Association invites you to an exciting meeting with a trade show and producer sessions of interest to all fish farmers (not just trout farmers). The show has been scheduled to run immediately after the American Zoological Society tradeshow and conference.

Two thriving theater districts offer everything from the classics to experimental music and live theater. Milwaukee has more park land per person than any other city in the United States. And finally, Milwaukee means FOOD. Here, the Friday night fish fry has been elevated to the level of an art form. The rich cultural diversity of the city is readily apparent in the variety and hospitality of its restaurants that offer European, Asian, African, Middle Eastern, and Latin cuisine. Food enthusiasts will find everything from the traditional to the exotic in settings that range from four star establishments to neighborhood diners.

Area highlights and tours include:

- Miller Brewing Company
- Lakefront Brewery
- Sprecher Brewing Company
- America's only brewery tour by boat
- Harley Davidson
- Milwaukee Art Museum
- Milwaukee River & Lake Michigan Shoreline boat tour
- Rushing Waters Trout Farm
- UW Great Lakes WATER Institute
- Milwaukee County House of Corrections Fish Farm
- Discovery World at Pier Wisconsin

LODGING

Hilton Milwaukee City Center
509 W. Wisconsin Ave.
Milwaukee, WI
414-271-7250
Fax: 414-271-1039

www.hiltonmilwaukee.com

12 minutes from General Mitchell International Airport; covered parking; indoor waterpark; spa; fitness center; restaurants, pubs, and much more!

Room rates: \$109 single/double (ask for Trout Farmers group rate)

Speaker Agenda

Wednesday, September 17

3:00 – 5:00 pm Conference Registration

7:00 – 10:00 pm Pub Crawl, meet in hotel lobby at 6:30pm

Thursday, September 18

7:00 am - 6 pm Trade Show open

7:00am – Noon Continued Registration

8:00 – 4:00 pm University of Wisconsin Sea Grant
Aquaculture Library available for perusing (this is not a book sale). Located in the Kilbourn Room, 5th Floor

7:00 – 8:00 am Continental breakfast reception- Trade Show area

Moderator: Bob Robinson

8:00 – 8:10 am US Trout Farmers Association President, Jerry Zinn. Welcoming Remarks

8:10 - 8:25 am "Welcome to Milwaukee" Dr. Val Klump, Director, UW - Great Lakes WATER Institute

8:25 – 8:40 am "Welcome and a Brief Overview of Trout Farming in Wisconsin" - Jeff Taylor, WAA President, General Manager Star Prairie Trout Farm

8:40- 9:10 am "Collaborative Relationship Research Service – Trends and Developments: A National Perspective" Dr. Gary Jensen, USDA

9:10 - 9:40 am "Outcomes of the USDA Stakeholder Workshop – and the ARS Aquaculture Action Plan" Dr. Jeff Silverstein, USDA –Ag Research Service – George Washington Carver Center

9:40- 9:55 am "Siscowett – The Other Lake Trout." Rick Goetz, UW – Great Lakes WATER Institute

Moderator: Jerry Zinn

9:55 - 10:30 am VHS Summit
MI- Gary Whelan; OH- Dr. Forshey; WI- Dr. Kebus; NY – Jeff Loukmas; MN – Roy Johannes; IN – Randy Lang; PA- Brian Wisner, National – Randy MacMillan, Betsy Hart, Gary Egrie, Andy Goodwin

10:30 – 11:00 am BREAK– Trade Show area

11:00 – Noon VHS Summit Continued

Noon – 2:00 pm USTFA Board of Directors Lunch Meeting

Noon – 1:30 pm BREAK – Lunch in the Trade Show area

Moderator: Bob Robinson

1:30 – 2:30 pm National Aquaculture Association open forum (Get to know your board members) – Includes all board members present (Randy MacMillan, Betsy Hart, Bob Robinson, Ken Cline, Brent Blauch, Rick Martin)

2:30- 3:20 pm BREAK - Trade Show - Vendor Presentations: Browse and Buy at the Trade Show

3:20- 3:40 pm "How to Tell Your Story to More Effectively Market Your Fish" Mary Smith, Director of Marketing – The Plitt Company, Chicago, IL

Cont on page 14

3:40- 4:00 pm “Seafood Wallet Cards: How and Why”,
Michelle Jost, Director of Sustainable Practices – John
G. Shedd Aquarium, Chicago, Illinois

400 – 4:15 pm “Improving Growth in Finfish: Approaches and
Mechanisms.” Brian Shepard, USDA–Ag
Research Service

4:15- 4:30 pm “Managing Fish Pathogens in Wisconsin
DNR's Coldwater Fish Hatcheries” Sue Marcquenski,
W-DNR, Fish Health Laboratory

4:45 – 6:00 pm WAA Board of Directors Meeting

6:30pm – ‘til President’s Reception & Raffle in Trade
Show

Friday, September 19

8:00 – 4:00 pm University of Wisconsin Sea Grant
Aquaculture Library available for perusing

NOTE: Friday Morning has 2 Concurrent Sessions

Session 1 Moderator: Jerry Zinn

8:00 – 8:25 am “Pioneer Trout Farmers of Wisconsin” Steve
Yeo, UW - Great Lakes WATER Institute

8:25 – 8:50 am “Is There Something Fishy About Your
Water Quality? Ensuring the Best Environment for
Trout” Robert Paddock, UW - GLWI

8:50 – 9:15 am “Soaring Feed Ingredient Prices: What Can Be
Done To Control Cost, Maintain Performance, and
Improve Sustainability of Trout Production” Rick
Barrows, USDA–Ag Research Service.

9:15 – 9:45 am BREAK – Trade Show area

9:45 – Noon Current Project updates and progress to
include outlining plans for the next five year cycle in-
cluding stake holder input from USDA/ARS/
NCCCWA to include:

“Hosts, Pathogen and Environmental Interactions in Cool
and Cold Water Aquaculture”, Gregory Wiens, Immunogeneticist –
USDA/ARS, National Center for Cool and Cold Water Aquacul-
ture, Kearneysville, WV

“Utilizing Genetics for Enhancing Cool and Cold Water
Aquaculture Production”, Gregory Weber, Reproductive Physiolo-
gist – USDA/ARS, NCCCWA, Kearneysville, WV

“Identification and Characterization of Genes Affecting
Cool and Cold Water Aquaculture Production”, Yniv Palti, Mo-
lecular Geneticists – USDA/ARS, NCCCWA, Kearneysville, WV
“Development of Sustainable Land-Based Aquaculture
Productions Systems”, Dr Steve Summerfelt, Aquaculture Engi-
neer – Conservation Fund Freshwater Institute, Shepherdstown,
WV

“Integration of Nutritional, Genetic and Physiological
Approaches to Improve Production Efficiency of Rainbow Trout”,
Rick Barrows, Research Physiologist – Hagerman Fish Culture
Experiment Station, Hagerman, ID

Session 2 Moderator: Debra Sloan

8:00- 8:25 am “The Recent Advances in Yellow Perch
Research” Jim Held, Aquaculture Outreach Specialist
– UW Extension

8:25- 8:50 am “A Cost-Benefit Analysis of Plastic (HPDE)

Tank Systems” Dan Miller, Senior Project Coordinator-
Aquaculture – West Virginia University

8:50- 9:15 am “Aquaculture, Microevolution, and Lake Trout
Restoration.” John Janssen, UW-GLWI

9:15- 9:45 am BREAK – Trade Show area

10:15 – 10:40 am “BioSecurity – What’s in It for Me?” Cindy
Borgwordt, Fish Health Specialist – Lincoln University

10:40- 11:05 am “Production Methods of Food Sized Bluegill
Sunfish” Charles Hicks, Research Investigator – Lincoln
University

11:05- 11:30 am “Sidewall-Box Airlift Pump Provides Large
Flows for Aeration, Co2 Stripping and Water Rotation I
n Large Dual-Drain Circular Tanks,” Dr. Steven
Summerfelt, Director, Aquaculture Systems Research –
The Conservation Fund’s Freshwater Institute,
Shepherdstown, WV

11:30- Noon “Update on Recirculating, Tilapia, Mosquito
Fish, and Gamefish Facility Located in New Orleans,
and YES We Did Survive the Hurricane,” Wayne
Watzke, Aquaculture Director – Orleans Parish Criminal
Sheriffs Office.

Noon – 1:30 pm BREAK – Lunch and Trade Show Area

Moderator: Bob Robinson

1:30 – 1:55 pm “Aquaculture and the Media” Rick Martin,
Publisher – Fish Farming News

1:55 – 2:30 pm “Nutrition Forum: Why Does Feed Cost so
Much Now? Questions and Answers” David Brock,
Nutritionist – Rangen Feeds; Dr. Mark Griffin,
Nutritionist – Purina Feeds; Chris Nelson – Silver Cup
Fish Feeds

2:30 –2:45 pm BREAK – Trade Show area

2:45 – 3:15 pm “Sustainable & Organic Aquaculture
Certification” Deborah Brister, Superintendent of
Fisheries, Wildlife and Conservation –University of MN

3:15 – 3:40 pm “Reflections on 19 Years in the Intensive
Recirculating Tilapia Business to Include Fry Fingerling
and Food Fish Production” Steve Abernathy – Til-Tech
Aquafarms, Robert, LA

3:40- 4:05 pm “What We Want to Know about You and Your
Ornamental Fish Before We Would Even Consider Buy-
ing from You,” Kevin Kohen, Director for Drs. Foster and
Smith – LiveAquaria.com, Rhinelander, WI

4:05- 4:35 pm “Aquaculture Drug Approvals: Successes and
Challenges” Roz Schnick, National Coordinator for
Aquaculture New Animal Drug Applications – MSU

6:00 -7:00 Reception – Sponsored by Silver Cup

7:00- 8:30 Banquet and Awards

Saturday, September 20

8:00 am- 5:00 pm – Tours of Great Lakes WATER Institute,
Milwaukee Corrections Fish Farm, Rushing Waters
(Palmyra, WI) – *Return late afternoon to Hilton*
(Lunch Sponsored by Kasco Marine and Rushing Waters)
Meet in the hotel lobby at 7:45am for bus boarding.

**US Trout Farmers Association
Midwest Aquaculture Conference and Trade Show
September 18-20, 2008**

REGISTRATION FORM

Please complete the entire form and return with payment to:

USTFA, PO Box 1647, Pine Bluff, AR 71613
Tel. 870/850-7900; Fax. 870/850-7902
(USTFA Federal ID # 31-1546840)

Name _____

Company _____

Address _____

City _____ State _____ Zip _____

Telephone () _____ Fax () _____

Email _____

Additional person(-s) _____ Name(-s) _____

ALL-INCLUSIVE REGISTRATION fee includes: all conference sessions, trade show, coffee breaks, lunch, President's Reception and banquet. Note: Tour is a separate fee.

	Advanced	Late (after 8/31/08)
_____ Individual	\$130.00	\$170.00
_____ Spouse or each additional company representative	\$ 80.00	\$100.00
_____ One-Day Registration	\$ 70.00	
_____ Student	\$ 30.00	\$ 50.00
_____ Banquet only	\$ 45.00	
_____ Industry Tour	\$ 45.00	

TOTAL ENCLOSED _____ (US\$)

You may pay online with a credit card using PayPal...go to www.ustfa.org

Kasco® Aeration

Affordable • Dependable • Efficient



Used for:

RACEWAYS and PONDS: Increase fish density and feeding rate.

TANKS: Maintain densities of up to .5 pounds of fish/gallon of H₂O. Vent CO₂.

EMERGENCY AERATION: 3.0 lbs/O₂/hp/hr. One person can move aerators from pond to pond.



"We've been using Kasco for years and they are very reliable. In fact, we do not have to measure dissolved oxygen levels in the ponds with Kasco Aerators."

Mike Clark – Farm Manager for Keo Fish Farms, the world's largest producer of hybrid Striped Bass fingerlings.



"Kasco Aerators are THEE most effective aerator out there. Not only do they aerate effectively, they also degas carbon dioxide. We have some units that have been operating for 10 years without any work done to them at all!"

Steve Abernathy – Owner of Til-Tech Aquafarm, which produces Tilapia fingerlings in an indoor recirculating facility.



"I use and sell Kasco Aerators because they have always been dependable and have served us well in our small ponds."

Paul Williams – Owner of Owen and Williams Fish Farm, producers of game fish, grass carp, and catfish.



"We have a bunch of Kasco units and find them to be efficient, dependable, and portable. They are a good choice for our farm!"

Peter Fritsch – Farm Manager for Rushing Waters Trout Farm, the largest Rainbow Trout producer in the Midwest.



Manufactured by:

KASCO MARINE, INC. 800 Deere Road, Prescott, WI 54021-1241
(715) 262-4488 • FAX (715) 262-4487
www.kascomarine.com • sales@kascomarine.com

Need we say more!

FEDERAL LEGISLATIVE UPDATES

WAA has sent a letter to USDA/Farm Service Agency (FSA) encouraging them to incorporate all farm-raised fish, including bait fish and fish raised for stocking, into the 2008 Farm Bill - the Emergency Assistance for Livestock, Honey Bees and Farm-Raised Fish (EALHF) Program. Currently only food fish are eligible for assistance.

WAA also commented on HR 6311, Nonnative Wildlife Invasion Prevention Act. As written, HR 6311 is expansive, taking a broad brush approach and has the potential to severely restrict livestock commerce in the United States. Using the term nonnative includes most pets including dogs, cats, and birds, and it also might prohibit livestock animals such as cattle, sheep, swine and horses. Currently, one of the most difficult situations in livestock commerce is that the USFWS does not recognize private ownership of species of wildlife even though the states recognize these species (and individual specimens) as livestock, which are part of agriculture statutes. WAA believes that as written, HR 6311 will have a severe effect on livestock commerce in the United States. WAA also believes that a national approach to invasive species has too many complications and does not serve the issues at a local or regional level or consider the implications to the multi billion dollar livestock industry. WAA is encouraging dialog to find reasonable solutions so that our industry or other livestock industries are not threatened.

From the Editor

If you have not signed up for WAA list serv messages, I strongly suggest you contact me (cindy@wisconsinaquaculture.com) with your email address. Since the beginning of the year, 28 messages have gone out to WAA members. These ranged from DATCP VHS Emergency Rule and Permanent Rule, DNR VHS Emergency Rule and Invasive Species Rule, DATCP and DNR Hearing Notices, Conference and workshop information, Flood Assistance Programs, and information on grants, research and marketing. This has proved a vital way to get important information out to members quickly. This information is also on our website.

Our classified ads cover a wide variety of items. If you have any equipment or fish for sale, or are looking for something - PUT IT IN OUR CLASSIFIEDS. There is no change for this. Currently there are hatching jars, fiberglass tanks, aerator, recirc equipment for sale as well as fish for sale. We also have help wanted and real estate listings.

By the time you get this issue, WAA will have had it's first Fish Farm Day. Whether you participated or not, we would like your input and feed back. Please fill out the form on page 26 - it's not very many questions - and mail or email Mike Heilman. This will

The First Steps in BioSecurity

VIRKON® AQUATIC

Disinfectant & Virucide

Specifically formulated and EPA labeled for use in Aquaculture. Use to prevent the spread of Viruses, Bacteria, Fungi and Molds.



OVADINE®

Fish Egg Disinfectant

Buffered PVP Iodine for use on fish eggs. Now approved in Canada!



The Aquatic Life Sciences Companies

World Leaders In Fish Health Products



Tel: +1.360.384.5898

Fax: +1.360.384.0270

1.800.283.5292 • info@wchemical.com

www.wchemical.com

Ferndale, WA, USA



Tel: +1.250.752.5256

Fax +1.250.752.5188

1.800.663.2282 • info@syndel.com

www.syndel.com

Qualicum Beach, BC Canada

help us with next year's Fish Farm Day.

The June Aquaculture Field Day and Fish Fry went off without a hitch and having the tent this year definitely helped with the off and on drizzle. I would like to thank NADF for donating the perch, and Mike and Barb Kelm; Jeff and LeAnn Malison; and Dave, Susan and Chance Gollon for their help in setting up, cooking, serving and cleanup. Our picnic couldn't have happened without your help!

Our 2009 conference will be held in Hayward, March 13 & 14. As we confirm things, they will be posted on the website. The 2009 Aquaculture Poster contest will have the theme "Farm Raised Fish is Healthy" and the posters will be judged at the 2009 conference.

A Visit to Seven Pines Fishery, Inc.

by Bob Robinson, Kasco Marine, Inc.

I picked up my friend Bob Lusk (the Pond Boss), from his hotel in Eau Claire, WI and we headed North for a fishing trip in Canada. We had predetermined to make a pit stop at Seven Pines Fishery, Inc located in the middle of nowhere in Northwestern, WI (actually Lewis, WI) on the beautiful June day.

I'd hate to have to plow (for snow) the driveway leading into this place simply because it is maybe a mile long and narrow. Bob says to me, "This is pretty cool." The road dead ends into Seven Pines Fishery. I never did ask why it is called Seven Pines and I actually think a better name might have been 7 Million Pines. The first thing we notice is the hauling truck with the farm name written on the side (one of two that they own). Our attention then immediately



turns to one of the four side walls of their home/office. The bottom 1/3 of one of the walls is actually an aquarium teaming with game fish that can be viewed from the inside as well as the outside. Once inside we are greeted by Hugo and Ruby Ketulla (owners of the farm since 1964). I also immediately realize that the farm is their life simply by viewing the layout of the home. The home serves as an office, living quarters and sleeping area all in an open area overlooking most of the ponds on the farm from a hill.

Ruby and Hugo (as always) greet us with a smile on their faces and Hugo has his token cigar near. This cigar has lead to more than one colorful story, but one that Ruby immediately shares with us goes something like this. Ruby and Hugo (as always until 2 years ago) were driving the delivery truck on a longer than normal ride. Hugo was riding shot gun and smoking away on his stogie. All at once Hugo shoots out "dammit pull over I'm on fire." They quickly put out the cigar induced flame and proceeded on their journey. This fish farming journey actually started in 1955 just outside of Eagle River, WI at Otter Rapids next to the Wisconsin River. For those of you who have made it to this part of the country, I suggest to put it on a list of places to see. From the national snowmobile championship race to the abundance of lakes and wildlife, it truly is a place like no other here on earth. Ruby also adds that they did farm fish in the upper peninsula of Michigan by Watersmeet for a short period of time (yes this is the same town that many of you have seen in a commercial that has the school with the mascot nickname of the Nimrods).

In 1964 they purchased the property they currently farm which is over 500 acres with 19 spring fed ponds covering about 10 acres of property. Fish have been raised here since sometime in the late 1800's. This farm was the first to be

granted a fish hatchery license within the state of WI. At first the farm supplied food fish for Seven Pines Lodge and then evolved into supplying sportfish including Rainbow and Brown Trout, Largemouth bass, Black Crappie and sunfish. With the help of their sons David and Richard, this farm has been family owned and run from the beginning. When they first started raising trout, the eggs would be purchased from Troutlodge. Now the boys strip the fish, do the hatching and generally take care of the fish. Trout are spawned on the property. Most of the PR and sales for the farm lie in the hands of Ruby these days. The hatch house that eggs be-

come fry in is called the "new" hatchery and it was built in 1909. Collection of spawn begins in November. Once the eggs hatch the fry still have their egg pouch. Once the egg pouch is empty each fry will swim up to be fed in long narrow concrete tanks with about 1' of water in them. These fry are then feed often during the day and end up in their raceways outside.

The adult fish are sold in a variety of sizes and to a variety of buyers including home owners with ponds, fish and game clubs, lake associations, urban fishing

programs, other hatcheries and even zoos. In fact on the day we visited, fish were being delivered to a zoo in Minneapolis to feed bear. Most deliveries now include *Cont pg 19*

SEVEN PINES FISHERY, INC.

1029 Clam Falls Drive, Frederic, WI 54837-4705

WHOLESALE

SERVING THE MIDWEST



**Rainbow and Brown Trout
Fry Now Available
Fingerling to Catchable**

HUGO & RUBY KETTULA

Write for Information or Phone 715-653-2271

Fax 715-653-2271

www.sevenpinesfishery.com

Seven Pines, Cont from pg 19

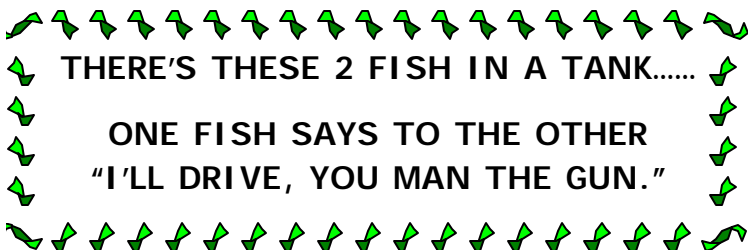
a fuel surcharge to help with rising fuel costs. They have delivered to IN, IL, MN, WI, ND, and SD and throughout WI. Fish in the ponds are feed mostly by hand with Sliver Cup feed at a 40% protein and 10% fat level. Dan figures the feed conversion ratio all together on the farm might be in the neighborhood of 1.2:1. Water comes into the property at about 2200 gpm @ 48 degrees through natural springs without any pumping. When the need arises, they use either Fresh Flo or Kasco Surface aerators to boost oxygen levels in some of the raceways. In fact Seven Pines was the first fish farm to act as guinea pigs for the Kasco aerator units that we started making some 20+ years ago.

Some straight shooting comments made by Ruby included "Don't expect to get rich overnight...it is tough to make a living at what we have been doing for the greater part of our lives. You must really enjoy it and put in long hours to become profitable." "VHS has affected us because it basically shut us down for a time period until we were certified disease free by the VHS standards." This is in spite of the fact that they have always been inspected and passed with health certificates. Although a few people come to pick up fish, they are never allowed to dump their water. Taking their own eggs and preventing the dumping of water on their property have allowed them to maintain disease free fish that leave the property.

Ruby was quick to suggest that asking to come under the jurisdiction of the Dept of Ag was thought to be a better choice than under DNR rules. The farmers within the state got that wish a little over 10 years ago and now have to deal with both the Dept of Ag and DNR which results in more paperwork and less time available to actually work the farm. "Regulations are the biggest obstacle we have faced throughout the history of this farm," Ruby chimes in. Asking Dave if he would do anything different on the farm if he could redesign it he said, I'd make all of the ponds out of concrete and I'd also dig them a bit deeper (currently they might have a max. depth of maybe 3-4 feet with sloping sides).

Thinking back to the first time I met Ruby and Hugo the visions that come to mind include:

- Ruby and Hugo always with a smile on their faces
- Meeting Hugo for the first time in 1987 at a aquaculture meeting in Stevens Point WI and noticing two things 1) His interesting accent. 2) Suspenders to hold up his pants (or for decoration)
- Running into Hugo with Bob Winkle at a national meeting in New Orleans outside their hotel. And the first few words out of their mouths went something like..."WOW a fellow cheesehead in New Orleans.....let's go get a beer"



THE COOK'S CORNER - from Dani Klontz

Calypso Salad

1 lb. Smoked trout, diced
1/2 cp diced fresh pineapple
1/4 cp finely diced onion
1 clove garlic, minced
1/4 cp mayonnaise
1 Tb curry powder
1 head lettuce, coarsely torn
1 green, red or yellow pepper, cut julienne
Pineapple slices
Cucumber slices

Place trout in large mixing bowl. Add pineapple, onion, garlic. Combine mayonnaise and curry powder, add to fish mixture. Season to taste with salt and pepper. Cover tightly and refrigerate until well chilled, about 1 hour. Place salad in center of large platter, surround with lettuce, pepper, pineapple slices and cucumber slices.

Serves 4

- Their passion to help the industry.
 - Ruby "misplaced" Hugo a few years back at a recent state conference, only to have him show up sitting at a table drinking beer with my dad.
- Ruby and Hugo have been inducted into the Wisconsin Aquaculture Hall of Fame. In my exposure to this industry, which spans over 25 years, I think there is no couple more deserving. Hugo's quick wit might not be quite as quick as it once was, but his smile and cigar never leave him and will be a memory I will take with me to my grave..... Seven Pines make a very interesting story that has only been touched on with these words. It is a cool place with lots of history with some pretty darn cool people..... check out more at www.sevenpinesfishery.com

Also from WAA
the beautifully illustrated, frameable
"Fish of Wisconsin Poster"

\$5 each, or \$3 each for 10 or more, includes shipping

WAA Baseball Cap

Faded Denim w/ WAA Logo

All items viewable on our website:

www.wisconsinaquaculture.com

Call, write, or email

P.O. Box 1408, Bayfield, WI 54814

715-779-3081; cindy@wisconsinaquaculture.com

**FISH HATCHERY/AQUACULTURE
BUSINESS OPPORTUNITY
In Northern Wisconsin
A current profitable business**

Includes

16 +/- acres

20 ponds of various sizes & depths

2 drilled wells

Beautiful 3 bedroom, 2 bath residence

Other outbuildings

Various Trucks & Equipment

All customers & delivery routes

\$400,000

NOTE: Additional acreage/ponds and peat dirt business available for additional price—Call for Details



Howard Borchert
RE/MAX New Horizons Realty
715-339-3536
www.howard-sells.com
hrb@pctcnet.net



**SAVING FISH IS WHAT
FRESH-FLO DOES BEST**



**SAVING ENERGY
IS A NEW TALENT**

■ New Line of Wattsaver Aerators Can Save Up To 43% In Energy Use.

■ Same Outstanding Design Proven for Adding Oxygen To Lakes, Ponds, Raceways.

Keep your fish healthy—and your operating costs down. Fresh-Flo now offers a new, optional line of aerators equipped with Wattsaver motors on 1/3, 1/2 and 1 hp. models. Choose standard Fresh-Flo aerators, or new Wattsaver models, and experience the long term dependability and big time efficiency only Fresh-Flo aeration can provide.



"Wattsaver"

12-VOLT
transport
aerator --



has new long life
Leeson-built motor.
Fresh-flo's unit is
best in business.



FRESH-FLO CORP.
3037 Weeden Creek Rd., Sheboygan, WI 53061 U.S.A.
Ph: 920-208-1500, Fax: 920-208-6533
E-Mail: freshflo@axcool.net; Web site: www.freshflo.com

AQUA FIELD DAY & ANNUAL WAA PICNIC HIGHLIGHTS

by Sarah Kaatz,
Aquaculture Outreach Specialist, Central

The 2nd Annual Aquaculture Field Day and Vendor Fair was held Thursday, June 12th in Bayfield. The morning session was held at the Bayfield Pavilion. The day started with a discussion of fish farm biosecurity and implementation; Ron Johnson, aquaculture specialist, facilitated a round table discussion of how things had changed on fish farms since last year's VHS and Biosecurity focused Field Day. Other speakers and topics included, Rick Decker, Purina Mills, discussing "Feed Nutrition and the Price of Feed"; Jim Held, aquaculture specialist, "Weed Control for Ponds"; Greg Fischer, Northern Aquaculture Demonstration Facility (NADF), facility manager, "NADF Project Updates"; and Sarah Kaatz, aquaculture specialist, "UW-Extension Updates." The afternoon sessions were held at NADF in Red Cliff. The exhibiting vendors were: Purina Mills/AquaMax, Kasco Marine, Inc., Wisconsin Flowgate & Culvert Co. Inc., USDA-Farm Service Agency, and Bayfield County Land & Water Conservation Department. Three other vendors sup-



plied literature: AquaLogic, Troutlodge, and Western Chemical Inc. The afternoon was spent in Practical Skills Sessions, participants were able to rotate between sessions, taking in four different topics. They included "Water Quality", taught by Kendall Holmes, NADF Technician and Sarah Kaatz; "Aeration", taught by Bob Robinson of Kasco Marine; "Fish Sampling and Grading", taught by Dan Duffy, NADF



Technician and NADF interns, Jessica Kavanaugh and Mike Defoe; and "Larval Feeding" taught by Greg Fischer. The day ended with a general wrap up and discussion period. This year's event was attended by 50 people.

The following day, Friday, June 13th, was the WAA Board Meeting and WAIAC meeting, held at the Bayfield Pavilion, and the WAA Annual Picnic, held at NADF. The vendors had their booths set up and participants were able to mingle as a great picnic was being prepared. Fresh Whitefish and NADF's own Yellow Perch were cooked up for the occasion. UWSP's Dean of College of Letter's and Science, and friend of WAA, Dr. Lance Grahn was presented with a "Good Luck" cake and many well wishes as he prepared to take on his new role as Provost and Chief Academic Officer at the University of Central Arkansas. The Annual Picnic was attended by 61 people. Thank you to all who helped make both events successful!

Woods & Waters Enterprises, Inc.

- ◆ Pond Management, Design & Consulting
- ◆ Pond Chemicals & Sprayers
- ◆ Aeration Equipment, Windmill Aerators
- ◆ Algae & Weed Control for Ponds
- ◆ Fish Feeders
- ◆ Fish Stocking - Large & Smallmouth Bass, Channel Catfish, Jumbo Yellow Perch, Hybrid Bluegills, Wisconsin Walleye, Fathead Forage Minnows

Randal Roesler
W5259 Old 60 Road
Juneau, WI 53039
920-349-3318
thepondman@charter.net
www.woodsandwatersinc.com

Agendas / MINUTES

**Wisconsin Aquaculture Association
Quarterly Board Meeting
September 18, 2008, 4:45 pm
Hilton Milwaukee City Center, Milwaukee, WI**

AGENDA

Introduction of Board & Officers

Minutes from 6-13-08 and approval

Treasurer Report and approval

Secretary Report

Committee Reports -

Regulatory

Business Development

Research & Education

2009 Conference

Upcoming Workshops

Other Old Business

Honorary Board Member Category

New Business

Adjourn

WAA Board Meeting

DRAFT MINUTES 6/13/08

BAYFIELD PAVILION, BAYFIELD, WI

Board Chairman, Peter Fritsch opened the WAA Board meeting at 8:12 am

Board members present: Jeff Taylor, President; Terry Hogan, Vice President; Peter Fritsch, Board Chairman; Mike Heilman, Board Director; Cindy Johnson, Secretary/Treasurer; and Dave Gollon, Board Director, who joined later.

Board Directors not present: Bill West, Jerry Peplinski, Jim Pierce, and Fritz Gollon

There was no quorum, so absent board directors will be contacted for their vote on motions made.

Jeff Taylor asked all officers and attendees to introduce themselves and, along with Terry Hogan, asked for feedback from members on issues, expectations, etc. The most mentioned topics were economics and restrictive regulations.

Minutes

Mike Heilman made the motion to accept the minutes, 2nd by Jeff Taylor. (An email was received from Steve Nichols stating he was not the one who made the 2nd to adjourn the March Annual meeting)

Financial Report

Mike Heilman made the motion to accept the financial report, 2nd by Jeff Taylor

Secretary's Report

WAL conference: We, along with the other vendors, didn't get a lot of traffic. Cindy Johnson said there is a *Cont on page 24*

Wisconsin Aquaculture Industry Advisory Council

June 13, 2008 Meeting Minutes DRAFT

WAIAC Members Present: Peter Fritsch, Dave Gollon, Dan Gruendemann, and Jeff Taylor. Greg Fischer, Myron Kebus, and Jeff Malison.

WAIAC Members Absent: Jim Pierce and Bill West. Carol Dunn, James Gibson, Chris Hartleb, Jeff Hicken, Will Hughes, Phil Moy, Brian Shepherd, Bud Sholts, and Steve Yeo.

Others in attendance: Mike Bandli, Ed Baum, Lance Grahn, Dave Gruendemann, Terry Hogan, Ron Johnson, Sarah Kaatz, Kenny Kaszobowski, Karen Maron, Wally Maron, Dave Reto, Grace Robinson, Jerry Robinson, Randall Roeseler, Swen Schwenzen, Jon Wagner, Mark Williams, and Lucas Wycklendt.

Call to order: The meeting was called to order at 10:15 a.m.

Roll Call/Introductions

Minutes from March 13, 2008:

No changes noted. Motion to approve by Peter Fritsch. Second by Dan Gruendemann. Minutes approved.

Council Structure - 3 teams/workgroups

Meeting participants discussed the reorganization of WAIAC around teams/workgroups: identifying a lead fish farmer and UW Ext. Aquaculture Outreach Specialist to facilitate each team, confirming the additional team members needed and proposing the next step for each team. The teams are intended to add people as needed depending on work load. (See also page 25)

Business Development.

Focus: Creation, review and development of business development tools for aquaculture.

Lead Fish Farmer: Peter Fritsch, Rushing Waters Fisheries.

UW Extension Aquaculture Specialist: Sarah Kaatz.

The Next Steps: Set up a conference call through UWEX WisLine for July 10th. Ron Johnson will also help with this. Will develop a work plan from the call. Mike B will help with getting the agenda set.

Regulatory Policy.

Focus: Coordination, review and impact assessment of regulatory actions

Lead Fish Farmers: Dave Gollon, Gollon Bait & Fish Farm, and Terry Hogan, Hayward Bait.

UW Extension Aquaculture Specialist: Ron Johnson.

Next Steps: Set goal to work toward – organize the Rules and Regulations/Compliance workshop for December. Update at next WAIAC meeting. Decide when to pull policy makers together and meet face to face.

Research and Education.

Focus: Coordination and review of research, training, educational programming and outreach for aquaculture.

Lead Fish Farmer: Dan Gruendemann, Northside Enterprises.

UW Extension Aquaculture Specialist: Jim Held.

Need to focus on species other than perch – include *Cont pg 25*

floating



sinking



fish food

Whether you need floating or sinking fish food, Nelson & Sons can supply food for Salmon, Trout, Catfish, Tilapia, Shrimp and other species. Aquaculture feeds are our only business and are produced world wide. Ask for our FREE production manual.

Ask the people who feed Silver Cup. They'll tell you of our quality.



NELSON'S STERLING

SILVER CUP SELF SUSTAINING FISH FOOD

NELSON & SONS, INC.

R.S. No. 128

118 WEST 4800 SOUTH • P.O. BOX 57428 • MURRAY, UTAH 84157-0428
PHONE (801) 262-2991 TOLL FREE (800) 521-9092 FAX (801) 266-7126
www.silvercup.com info@silvercup.com

WAA Board Meeting Minutes, cont from pg 22

possibility of WAA being able to have an article in the WAL newsletter. She will check further into this.

WAA can hold its September board meeting at the USTF Midwest Aquaculture Conference in Milwaukee. There will be no charge to use the room.

Sarah Kaatz can represent the aquaculture industry at the Shawano County Farm Brunch on June 22. She will hand out posters, and have WAA brochures and recipes available, plus some fish samples from farmers. (see article on page 10)

Mike Heilman made the motion to accept, 2nd by Jeff Taylor

Committee Reports

Jeff Taylor said there will be changes in the WAA committees' organization and responsibilities. He has been talking with Mike Bandli and there will be more involvement between WAA, extension, and WAIAC committees. Jeff is considering condensing the committees, getting them functioning again, having monthly reports, and an article from each for inclusion in each Creel. **Jeff made the motion to restructure the committees, Peter Fritsch suggested that there be a person each committee chair/lead person reports to. Dan Gruendemann agreed to be the person the committee leads report to. Jeff will be the lead on the committee restructuring. This was 2nd by Terry Hogan.**

Upcoming Workshops

Ron Johnson said that Extension is doing 6 "Starting Aquaculture" workshops this summer/fall. 1 will be held in each of the 6 extension districts. The workshops will consist of a 3 hr morning session, lunch, then visiting a fish farm for a tour and demonstration. These will be held on a Saturday. Both Mike Heilman and Randy Roeseler offered their farms for tours and demonstrations. (*Editor's note - there will be 2 this fall and 4 next year, information will be posted on website*)

The July Environmental Sustainability Workshop to be held at Gollon Bait Farm has been postponed until next year due to the flooding in southern Wisconsin.

The Rules Workshop will be held again this year. It will be held around the first week in December. Jane Mussey has agreed to participate in this workshop. The fall WAIAC meeting will be held the same day at the same location.

Old Business

WAA Fish Farm Day Update

This event was suggested as a way to get the public to farms and promote aquaculture. Suggestions include doing tours of your farm/hatchery, offering samples of product, etc. The question was asked if we could have this event this summer. Mike Heilman received only 4 responses from the survey that was mailed out. It was suggested that a survey be mailed out in the next Creel. (If you haven't mailed in your survey, please see page 22) Peter suggested a Saturday or Sunday in August, and Saturday, August 23 was agreed on. Extension can help with this. Notices should be put in the 3 newspapers – The Country Today, Agri-view and State Farmer. A mailing will be made to all WAA members. An article plus a photo will need to be done for newspapers to run in advance to build up interest in the event.

NAA

Bob Robinson highlighted the benefits of being a NAA member. NAA can help with Lacey Act violations, federal legislation - they are connected with issues in Washington (they are more effective

with federal regulations than with state regs), depredation permits, NAA has a lobbyist and an attorney and they can represent Wisconsin Aquaculture with the federal legislators.

NAA has also put together a marketing program that is accessible to NAA members. Dave Gollon said that we need to come to an agreement over dues. There was general consensus on dues set at \$15/active member (currently we have 61 active members – total of \$915). **Jeff Taylor made the motion that WAA join now, 2nd by Terry Hogan.** Even though we will join this summer, a photo op/publicity presentation of the check to NAA will be done at the September USTF conference. WAA will promote in the Creel that NAA membership will be a benefit of joining WAA and Dave Gollon said that we should also encourage members to join as individuals.

Legislative

Dave Gollon – It was discussed if WAA should look into hiring someone to monitor aquaculture issues in the state and/or hire a lobbyist. Having a monitor would help with issues such as the recent AIS regulation that was put in the budget bill and was passed. A lobbyist would be more expensive and a lobbyist doesn't always find out about legislation in time for anything to be done, but someone who monitors legislation and issues will be able to give us prior notice.

2009 conference

Terry Hogan has checked into holding the conference in Hayward at the Ramada. Their facility can handle a conference of approximately 100-125 people. Terry said a tour of the Spooner hatchery can be included – it was suggested that this be part of the registration fee. **Jeff Taylor made the motion for the 2009 conference to be held on March 13-14, in Hayward. 2nd by Mike Heilman.** Terry will get a contract from the hotel and, if agreeable, we will sign it.

New Business

Dave Gollon brought up that when the board and officers express opinions, that it is made clear that they are not representing WAA and it's opinions. WAA needs a process whereby a member can be authorized to represent WAA. Jon Wagner said that maybe WAA needs to draw up a code of conduct. Jeff Taylor and Peter Fritsch will follow up on this.

Ron Johnson asked if the poster contest should be continued – Jeff and Peter said yes. We need a theme for next year. Peter suggested the theme be along the line of "Safety of Farm Raised Fish" or "Farmed Fish is Healthy".

Ron said he had a booth at the Great Lakes Visitor Center for the free fishing day on June 7th and over 580 adults and kids attended. He suggested that maybe WAA members can help with providing fish that GLVC can buy for this event next year and in return GLVC will promote WAA.

Lance has accepted a position as Provost and Dean of Faculty at the University of Central Arkansas. (see article on page 17)

Bob Robinson mentioned that NAA will have a board meeting in Milwaukee on August 22 & 23.

Honorary board membership – Jeff Taylor made the motion to create a honorary/retiree membership category (exact wording to be decided by the board), any member can nominate anyone for this category for the board to vote on and these will be members who do not have to pay to be a member of WAA. 2nd by Peter Fritsch.
Cont on page 25

WAA Minutes, cont from page 24

(All board members not present were contacted for their vote, all motions were passed unanimously)

The meeting adjourned approximately 10 am

Respectfully submitted,
Cindy Johnson

WAIAC Minutes, cont. from page 22

other industry people to make the workgroup more diverse as far as representatives for other species.

Next Steps: Suggested to use the Northern Aquaculture Demonstration Facility Industry Advisory Council – will expand and re-name mission, get priorities for next year. Plan to use Lance’s office for meeting in July.

Reporting back to the Council – Lead Fish Farmers and Extension Specialists will present work team plan and updates at the next Council meeting in December. Before that, want to have a conference call to pool results and put report together for The Creel. Will do this before September 1st, via conference call, plan on August

25th as the deadline for reporting back.

WAIAC Calendar

December (the first week) – Rules, Regulations and Compliance meeting and WAIAC meeting in Madison

March 12-14th – WAA Conference, Hayward

Presentations

Ron Zillmer’s presentation was cancelled. Ron Johnson gave an update on Mid State Technical College. MSTC is looking at a new land acquisition for an Environmental Center and would like to incorporate an aquaculture program. They will come to the WAIAC meeting and would like to know specifically what the industry needs and what MSTC needs from the industry. WTCS goes through a very extensive process to determine their programs; they will need to know what kind of employment opportunities there are in the industry and where exactly the industry is. This project is 5-7 years out, and UWEX has had 2 meetings with them to date.

Jeff Malison update of research. (See page 11)

Fish Health Updates:

- DATCP emergency rule is still in place – it is moving toward a permanent rule (see front page for details)
- Fees. (See the front page for details) *Cont on page 26*

Team	Calendar	Team Focus	Lead Fish Farmer (s) /Extension Specialist	Team Members
Annual Planning	March	Set calendar and general priorities for teams		General WAIAC Membership and Participants
Business Development	March	Creation, review and . development of business development tools for aquaculture	Peter Fritsch Sarah Kaatz	WAA Sales & Marketing Com? DATCP Ag Development Commerce/Tourism
Next Step: Set up July 10 th Conference Call to develop work plan				
Research & Education	June	Coord. & review of research, educational programming, training and outreach for aquaculture	Dan Gruendemann Jim Held	WAA Committees? NADF Advisory Council? DATCP - Dr. Kebus DPI/WI. Tech College System USDA-ARS UW-Mad (Malison)/Mke/ Stevens Point (Hartleb)/ NADF (Fischer)/Sea Grant/Ext Admin
Next Step: Use the NADF Industry Advisory Council, rename and expand mission. Hold meeting in July to set priorities for the year.				
Regulatory Policy	Oct./Nov.	Coordination, review and impact . assessment of regulatory actions	Dave Gollon Terry Hogan Ron Johnson	WAA Committees? DATCP Animal Health DATCP ARM DATCP Food Division Commerce Small Bus Ombudsman DNR Fisheries Management DNR/WAA Work Group?
Next Step: Set up meeting of policy makers. Decide on goals to work toward and update at next council meeting. Organize Rules & Regulations/Compliance Workshop for early December.				

Wisconsin Fish Farm Day

The Wisconsin Aquaculture Association, Inc. is sponsoring the First Annual Wisconsin Fish Farm Day on Saturday, August 23, 2008. We want to make this a yearly event and are requesting information and feedback from WAA members to make this a success. Even if you do not have any desire to participate in this event, please respond so we can have an accurate list of who is interested.

This will be a state-wide event for all WAA members to participate in. The focus of this is to help the public be more aware of: 1) aquaculture in Wisconsin, 2) aquaculture's importance to local and state-wide economies, 3) locally grown aquaculture products provide a safe product, and 4) aquaculture is important to Wisconsin in providing: a food source, fee fishing for families, fish for stocking, and baitfish. Events you could promote at your farm include sampling of your products (smoked fish, fish spreads, etc), tours of your facility (how you raise fish, what your market is, you are a state licensed farm), demonstrations, or discounts on your products.

Please answer the questions below. You may either 1) answer directly on the document and mail it to Brookcrest Fisheries, Ltd., W3698 County Road G, Cedar Grove, WI 53013, or 2) just number your answers in an email. Email your responses to Mike Heilman at Brookcrest@excel.net.

Fish Farm Day Survey

If WAA would sponsor an aquaculture farm day, would your farm participate? (yes/no)

Name of Farm _____

Does your farm have public access (parking lot, easily accessible)? (yes/no)

Do people visit your farm to purchase goods (retail or wholesale) (yes/no) or services (ex. consulting)? (yes/no)

Would you be concerned about any bio-security issue with people entering your farm? (yes/no)

Is there a local newspaper or some other type of local media you would like an advertisement or press release in to get publicity for your farm? (yes/no)

Name of desired advertising place

What month would be best for you to allow people to come to your farm? (June, July, August, September, October)

Do you have any comments or questions?

WAIAC Minutes, Cont from page 25

- Import permit increases – will increase from \$50 - \$90.
- New VHS findings.

Round Goby in Milwaukee harbor. Lake Michigan was already positive for VHS, but what is significant is that this is the first finding this far south.

Muskellunge in an Ohio reservoir. This is significant because it is outside the Great Lakes Basin. VHS was considered only to be inside the Great Lakes Basin – this finding changes that, it may also have an effect on the interim rule from APHIS.

- Whirling Disease. WD was found for the first time in Illinois rainbow trout.

Dr Kebus led a discussion about sampling numbers on the farm: The wild bait harvest requirements for health work have driven this discussion. For wild harvest, 20 fish for FHC, and 60 fish for VHS testing is required. DNR has said that for every wild harvest permit they issue it is required that an FHC is done for each species. The DNR issues 3000 harvest permits.

Question: Does it make sense to commingle groups of fish, hold for a period of time and then conduct the testing?

Answer: Depends on number of factors. Including:

How representative the sample is of the whole group?

What confidence level is required?

At what prevalence level does the virus need to be present?

The sensitivity of the test used.

The length of time the fish are held.

In order for the test to be valid and reasonable, the right number of fish needs to be tested for the specific situation. It may be more fish than currently required.

There was a question about quarantines and what happens.

If a reportable disease is found, it is reported to the Wisconsin State Veterinarian. Will be under quarantine or cease movement or, if proven to be medically separated, could be under partial quarantine.

Field veterinarian will take samples, return them to the lab.

Need to find out where the fish came from, where they have gone. Important to follow link and follow up with other farms – need to determine if it's on their farm as well. Until these things are sorted out, farm is not allowed to move fish.

Will also develop quarantine plan with the farmer. Will determine where they are at, and what is needed to be done to get off quarantine.

The time line involved with quarantine depends on several things, including: cooperation from the farmer, the amount of time it takes to go through the records (this can be very complicated - Record requirements are clearly stated in ATCP 10.61(10)), the actual disease that was found, and where the water from the farm is discharged to.

Next Meeting

Planned for early December in conjunction with the Regulatory Update Workshop in Madison.

Meeting Adjourned:

Motion to adjourn by Dave Gollon. Second by Peter Fritsch. All approved. The meeting was adjourned at 12:20 p.m.

Respectfully submitted by Mike Bandli and Sarah Kaatz

WISCONSIN AQUACULTURE ASSOCIATION Memberships are a great value — Join Now



- ◆ Workshops, Annual Meeting, Conference and farm tour
- ◆ Internet visibility through member-interactive WAA website
- ◆ Advocacy & Policy Development
- ◆ National Aquaculture Association updates

ASSOCIATE LEVEL—\$25

- ◆ Receive 4 Issues of *The CREEL*
- ◆ Name and address listed on members search
- ◆ Inclusion on member only list serv for vital information

ACTIVE—\$50 - **benefits of Associate level plus:**

- ◆ Active Members can vote and serve on board as officers and on WAIAC
- ◆ Listed by Business Type/ Fish Species/Producer Type/ Processing Type/Sales Method

GROUP—\$75

- ◆ 1 active membership and up to 4 associate members— farm employees, vendor employees, agencies, university, etc.

Check here if your • name, • address, • phone, • fax or • email has changed

Name _____ Title/Position _____

Business Name _____

Address— Mailing _____ Physical (will not be listed on website) _____

City, State Zip Code _____

Phone: Home (will not be listed on website) _____

Phone: Business (will be listed on website) _____

Fax _____ Website _____

Email _____ Put me on WAA list serv _____ Yes (need email address) _____ No
(for email messages)

Nature of Business (check one): • Wholesale • Retail • Broker • Research • Recreational/Private • Tribal
• School/Educational • Government • Aqua Supplies/Products • Veterinary • Aquaculture Consulting
• Cranberry Marsh • Farm Organization • Insurance • Laboratory • Other _____

Type of Membership: • Renewal • New

Active (\$50.00/year) _____ Associate (\$25.00/year) _____ Group (\$75.00/year) _____

(voting) (non-voting) (1 active member, up to 4 associates)

For Group lever, list members name (designate active member)

ADVERTISING OPTIONS AND RATES

Don't Have a Web Site? Get An Enhanced Web Listings

\$25 a year - info on member's page, incl. photo gallery, w/map and link

Have a Web Site? Get a Hot Link or Banner Ad

Hot Links: \$20 /year member, \$30/year non member Banner Ads: \$100/year

Advertise in "The Creel" - prices are per issue • Full Page \$100; • ½ Page \$60; • ¼ Page \$40; • 1/8 Page \$30

Send this form & a check or money order to: **WAA, P.O. Box 1408, Bayfield, WI 54814**

Office Use • Database

Wisconsin Aquaculture Association, Inc.

P.O. Box 1408
Bayfield, WI 54814

NONPROFIT ORGANIZATION
U.S. POSTAGE PAID
BAYFIELD, WI
0894898-MAB

**If your mailing label is incorrect, please contact Cindy @ 715-373-2990
or email to: cindy@wisconsinaquaculture.com**

